

Inventec® at core

Ultra-Density Hot Storage Solution



J80F - All-NVMe JBOF System

For years, mega datacenters had extensively used flash storage for achieving speed, whether in cache and database applications, or even nearly as boot drives. Yet, the exponential growth of data in all kind of predictions indicates the amount doubles every two years, and a 50-fold growth from 2010 to 2020. Therefore, to keep up with this growth is a critical challenge to datacenters.

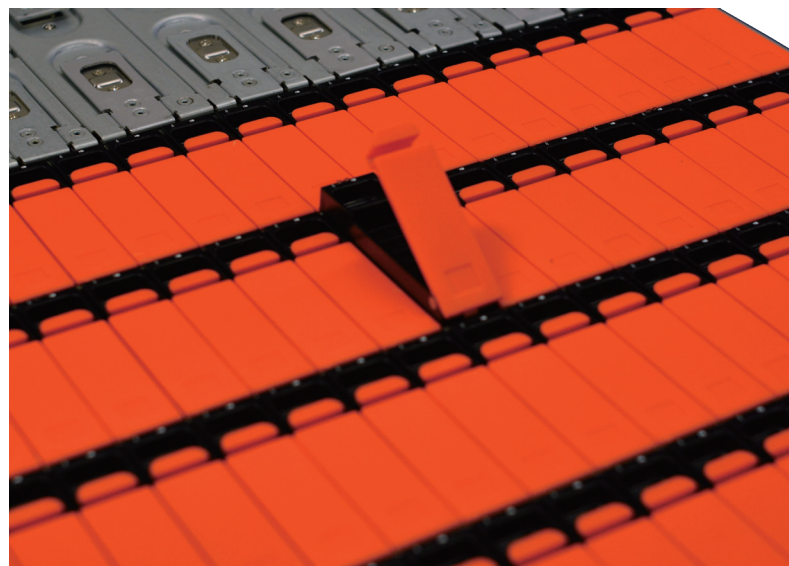
J80F is the best disaggregate flash storage solution to increase the operational efficiency for datacenters. Featuring up to eighty PCIe 3.0 NVMe SSDs in a standard 19" 3U chassis, J80F supports flexible deployment of extreme density or multiple hosts. It benefits datacenters to better scale out the flash capacity across multiple applications and fine-tune the compute-to-storage ratio. The series presents,

Ultra Density 3U Hot Storage JBOF (Just a Bunch of Flash)

NVMe could perform much greater IO bandwidth and lower latency than SATA and SAS, which makes it the best choice for hot storage applications among hyper-scale datacenters. A single J80F system carries up to eighty NVMe drives in total, and operates just the same as SAS/SATA JBOD.

Highlights -

- High density of 80 hot-swap NVMe SSDs
- Support up to 5 server host connections
- Optimal serviceability with all tool-less design
- Hot-swap SSD drives, fans, and power supply units



Inventec® at core

PMC



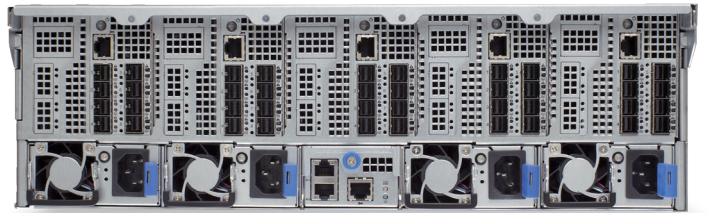
Flexibility in Expansion Deployment

J80F supports multiple switch configurations with embedded PMC SoC, which allows deployments of various SSD configurations and flexible mappings between host node and SSDs without a hardware change. By up to five multiple head node support, the compute-to-storage ratio of the system could be easily redefined by adjusting switch configurations.

Superior CAPEX and OPEX Saving

With J80F, it is easy to achieve high CPU to SSD ratio without being limited to the building block of servers. The whole system design supports hot-swap serviceability, fan and PSU redundancy, as well as tool-less SSD installation and replacement, which saves you time and expenses with trust-worthy reliability. ➤

| | |
|--------------------|---|
| Model Name | J80F |
| Positioning | Ultra Density Hot Storage JBOF |
| Form Factor | 3U rack mount with slide rail |
| Switch | 5x Broadcom BCM53333 PCIe Switch module |
| SOC | PMC PM8546A, 96x lane, supporting cascade |
| Network Controller | 10/100/1000M Mgmt port |
| External IO | Per rear PCIe switch module: 8x SFF8644 1x 100M NIC port (RJ45) 1x PWR LED/BTN Rear Panel: 1x 100M NIC port (RJ45) 1x 1000M Mgmt port (RJ45) 1x PWR LED/BTN 1x UID LED/BTN 1x CONSOLE port |
| Disk Drive Bay | Top Bay: 80x NVMe U.2 SSD, hot-plug |
| System Management | ASPEED 1250 |
| Power Supply | 2+2 redundancy Option1: 1400W (220V) Platinum Option2: 1600W (220V) Platinum |
| Fan | 5x 8086 dual-rotor fan |



ABOUT INVENTEC

Inventec Enterprise Business Group (EBG) was established in 1998 and has been focusing on the design and manufacturing of server systems. Inventec EBG is the key server system supplier of the global branding clients.

Inventec Corporation (TAO)

No.88, Dazhi Rd., Taoyuan Dist.,

Taoyuan City 33068, Taiwan

Tel: 886-3-390-0000

Fax: 886-3-376-2370

Email: TAOproductsupport@inventec.com

Website: EBG.Inventec.com

